

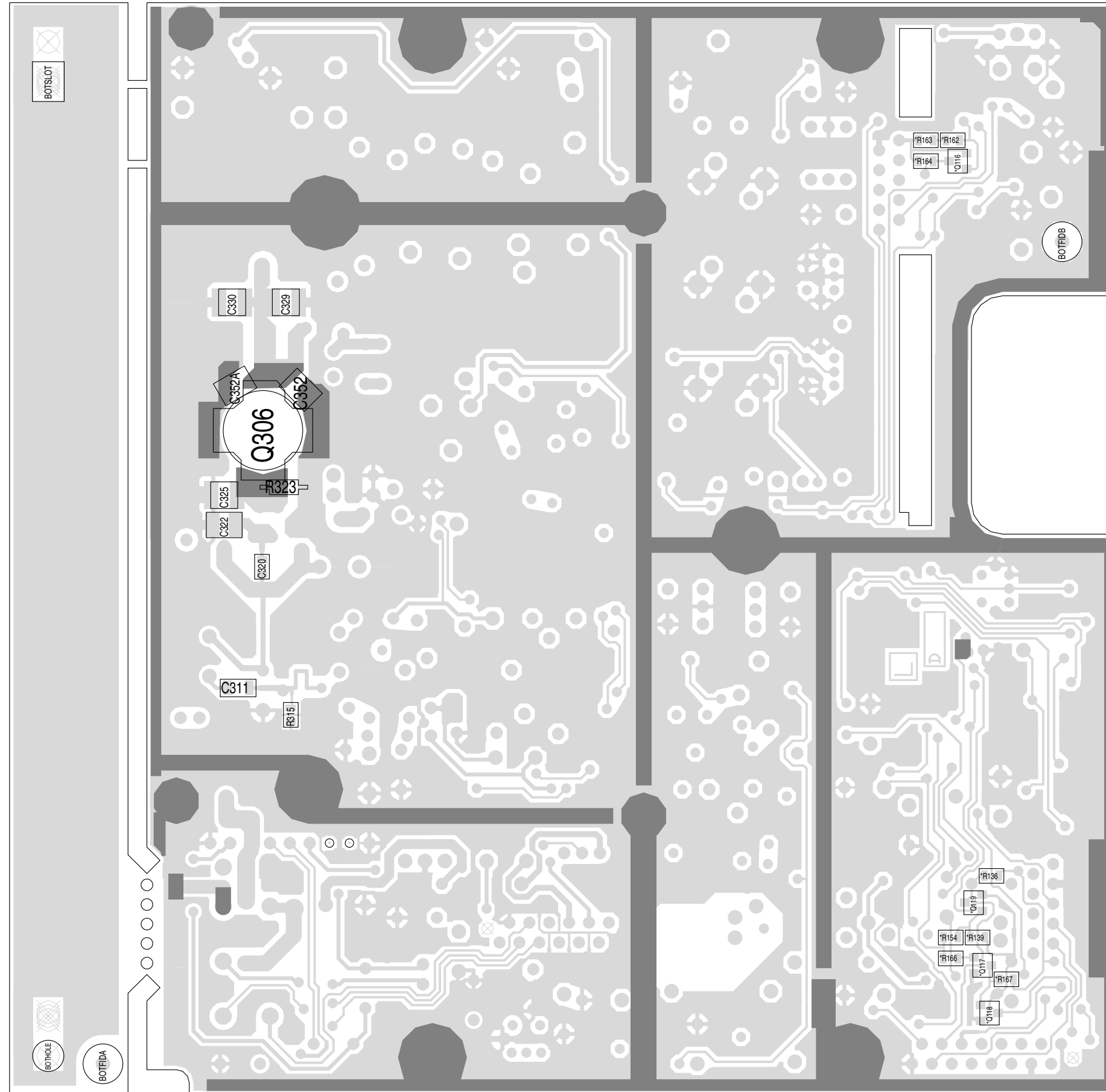
| Ref   | IPN          | Description                    | Ref  | IPN          | Description                    | Ref   | IPN          | Description                    |
|-------|--------------|--------------------------------|------|--------------|--------------------------------|-------|--------------|--------------------------------|
| **    | 219-02010-00 | T2000 16W LOOM LOGIC RF        | C218 | 020-57470-10 | CAP ELCT AI RDL 4U7 50V LO ESR | C415  | 020-19100-02 | CAP ELE RA 1000M 16V 12X20MM   |
| C1    | 015-24100-08 | CAP CER 0805 1N 10% X7R 50V    | C219 | 020-57470-10 | CAP ELCT AI RDL 4U7 50V LO ESR | C416  | 015-24100-08 | CAP CER 0805 1N 10% X7R 50V    |
| C2    | 015-24100-08 | CAP CER 0805 1N 10% X7R 50V    | C220 | 022-55150-10 | CAP MYLAR AI 15N 5% 63V POTTED | C419  | 015-06100-08 | CAP CER 1206 100N 10% X7R 50V  |
| C3    | 015-24100-08 | CAP CER 0805 1N 10% X7R 50V    | C221 | 022-57100-02 | CAP MYLAR AI 1M 20% 50V POTTED | C420  | 015-06100-08 | CAP CER 1206 100N 10% X7R 50V  |
| C100  | 015-25100-08 | CAP CER 0805 10N 10% X7R 50V   | C222 | 022-06100-05 | CAP MET POLY 100N 5% 50V 5.0HI | C423  | 020-08560-09 | CAP ELECT RAD 56M 50V 6.3*15.5 |
| C102  | 015-22470-01 | CAP CER 0805 47P 5% NPO 50V    | C223 | 015-23680-08 | CAP CER 0805 680P 10% X7R 50V  | C424  | 020-57470-10 | CAP ELCT AI RDL 4U7 50V LO ESR |
| C103  | 015-22220-01 | CAP CER 0805 22P 5% NPO 50V    | C224 | 015-23680-08 | CAP CER 0805 680P 10% X7R 50V  | C425  | 020-57470-10 | CAP ELCT AI RDL 4U7 50V LO ESR |
| C104  | 015-06100-08 | CAP CER 1206 100N 10% X7R 50V  | C225 | 015-23680-08 | CAP CER 0805 680P 10% X7R 50V  | C426  | 015-24470-08 | CAP CER 0805 4N7 10% X7R 50V   |
| C105  | 015-21180-02 | CAP 0805 1P8 1% NPO 50V        | C226 | 015-21220-02 | CAP 0805 2P2 +/-0.1P NPO 50V   | C427  | 020-57470-10 | CAP ELCT AI RDL 4U7 50V LO ESR |
| C106  | 015-23680-08 | CAP CER 0805 680P 10% X7R 50V  | C227 | 015-23680-08 | CAP CER 0805 680P 10% X7R 50V  | C428  | 020-57470-10 | CAP ELCT AI RDL 4U7 50V LO ESR |
| C107  | 015-22330-01 | CAP CER 0805 33P 5% NPO 50V    | C228 | 015-23680-08 | CAP CER 0805 680P 10% X7R 50V  | C429  | 015-23680-08 | CAP CER 0805 680P 10% X7R 50V  |
| C108  | 015-25100-08 | CAP CER 0805 10N 10% X7R 50V   | C229 | 020-58470-05 | CAP ELE AI RDL 47M 16V 6.3X7MM | C430  | 020-08560-09 | CAP ELECT RAD 56M 50V 6.3*15.5 |
| C109  | 015-21820-02 | CAP 0805 8P2 0.1 NPO 50V       | C230 | 015-24470-08 | CAP CER 0805 4N7 10% X7R 50V   | C431  | 015-25100-08 | CAP CER 0805 10N 10% X7R 50V   |
| C110  | 015-23120-01 | CAP CER 0805 120P 5% NPO 50V   | C231 | 015-23680-08 | CAP CER 0805 680P 10% X7R 50V  | C451  | 015-24100-08 | CAP CER 0805 1N 10% X7R 50V    |
| C111  | 015-23680-08 | CAP CER 0805 680P 10% X7R 50V  | C232 | 015-21680-02 | CAP 0805 6P8 +/-0.1P NPO 50V   | C455  | 015-24100-08 | CAP CER 0805 1N 10% X7R 50V    |
| C112  | 015-22100-02 | CAP 0805 10P +/-0.1P NPO 50V   | C233 | 020-57470-10 | CAP ELCT AI RDL 4U7 50V LO ESR | C152A | 015-25100-08 | CAP CER 0805 10N 10% X7R 50V   |
| C113  | 015-23120-01 | CAP CER 0805 120P 5% NPO 50V   | C234 | 020-57470-10 | CAP ELCT AI RDL 4U7 50V LO ESR | C153A | 015-23100-01 | CAP CER 0805 100P 5% NPO 50V   |
| C114  | 015-23680-08 | CAP CER 0805 680P 10% X7R 50V  | C235 | 015-25100-08 | CAP CER 0805 10N 10% X7R 50V   | C352A | 015-02270-06 | CAP CER 1210 27P NPO 500V      |
| C115  | 015-21820-02 | CAP 0805 8P2 0.1 NPO 50V       | C236 | 015-22390-01 | CAP CER 0805 39P 5% NPO 50V    |       |              |                                |
| C116  | 015-23680-08 | CAP CER 0805 680P 10% X7R 50V  | C239 | 015-25100-08 | CAP CER 0805 10N 10% X7R 50V   | D1    | 001-00012-90 | DIODE MR2520L O-VOLT SUPP      |
| C121  | 015-22330-01 | CAP CER 0805 33P 5% NPO 50V    | C240 | 015-23680-08 | CAP CER 0805 680P 10% X7R 50V  | D101  | 001-10043-90 | DIODE SMD BB439 VCAP SOD323    |
| C122  | 015-23680-08 | CAP CER 0805 680P 10% X7R 50V  | C241 | 015-23680-08 | CAP CER 0805 680P 10% X7R 50V  | D102  | 001-10043-90 | DIODE SMD BB439 VCAP SOD323    |
| C123  | 015-25100-08 | CAP CER 0805 10N 10% X7R 50V   | C243 | 015-23680-08 | CAP CER 0805 680P 10% X7R 50V  | D103  | 001-10043-90 | DIODE SMD BB439 VCAP SOD323    |
| C124  | 015-22220-01 | CAP CER 0805 22P 5% NPO 50V    | C244 | 015-21680-02 | CAP 0805 6P8 +/-0.1P NPO 50V   | D105  | 001-10000-18 | DIODE SMD BAT18 S-SW SOT23     |
| C125  | 015-21680-02 | CAP 0805 6P8 +/-0.1P NPO 50V   | C245 | 015-22120-01 | CAP CER 0805 12P 5% NPO 50V    | D106  | 001-10000-18 | DIODE SMD BAT18 S-SW SOT23     |
| C126  | 015-22220-01 | CAP CER 0805 22P 5% NPO 50V    | C246 | 015-23680-08 | CAP CER 0805 680P 10% X7R 50V  | D107  | 001-10000-17 | DIODE SMD DUAL BAT-17 SOT23    |
| C127  | 015-22560-01 | CAP CER 0805 56P 5% NPO 50V    | C247 | 015-21470-02 | CAP 0805 4P7 1% NPO 50V        | D108  | 001-10000-17 | DIODE SMD DUAL BAT-17 SOT23    |
| C128  | 015-22330-01 | CAP CER 0805 33P 5% NPO 50V    | C248 | 015-25100-08 | CAP CER 0805 10N 10% X7R 50V   | D110  | 001-10000-17 | DIODE SMD DUAL BAT-17 SOT23    |
| C129  | 015-25100-08 | CAP CER 0805 10N 10% X7R 50V   | C257 | 015-22180-01 | CAP CER 0805 18P 5% NPO 50V    | D111  | 001-10000-17 | DIODE SMD DUAL BAT-17 SOT23    |
| C130  | 015-25100-08 | CAP CER 0805 10N 10% X7R 50V   | C300 | 020-07470-04 | CAP ELECT RAD 4M7 25V 20%8*13  | D200  | 001-10000-99 | DIODE SMD BAV99 D-SW SOT23     |
| C133  | 015-23270-01 | CAP CER 0805 270P 5% NPO 50V   | C301 | 015-24100-08 | CAP CER 0805 1N 10% X7R 50V    | D202  | 001-10000-70 | DIODE SMD BAV70 D-SW SOT23     |
| C134  | 015-22100-02 | CAP 0805 10P +/-0.1P NPO 50V   | C302 | 015-21560-02 | CAP 0805 5P6 1% NPO 50V        | D203  | 001-10043-90 | DIODE SMD BB439 VCAP SOD323    |
| C135  | 015-23150-01 | CAP CER 0805 150P 5% NPO 50V   | C303 | 015-06100-08 | CAP CER 1206 100N 10% X7R 50V  | D204  | 001-10043-90 | DIODE SMD BB439 VCAP SOD323    |
| C136  | 015-22270-01 | CAP CER 0805 27P 5% NPO 50V    | C304 | 015-24100-08 | CAP CER 0805 1N 10% X7R 50V    | D205  | 001-10043-90 | DIODE SMD BB439 VCAP SOD323    |
| C137  | 015-23680-08 | CAP CER 0805 680P 10% X7R 50V  | C305 | 015-22220-01 | CAP CER 0805 22P 5% NPO 50V    | D206  | 001-10043-90 | DIODE SMD BB439 VCAP SOD323    |
| C138  | 015-22270-01 | CAP CER 0805 27P 5% NPO 50V    | C306 | 015-22220-01 | CAP CER 0805 22P 5% NPO 50V    | D208  | 001-10000-18 | DIODE SMD BAT18 S-SW SOT23     |
| C140  | 015-22100-02 | CAP 0805 10P +/-0.1P NPO 50V   | C307 | 015-06100-08 | CAP CER 1206 100N 10% X7R 50V  | D209  | 001-10000-18 | DIODE SMD BAT18 S-SW SOT23     |
| C141  | 015-23270-01 | CAP CER 0805 270P 5% NPO 50V   | C308 | 015-23680-08 | CAP CER 0805 680P 10% X7R 50V  | D301  | 001-00013-45 | DIODE SCHTTKY 1SS97/2          |
| C142  | 015-22330-01 | CAP CER 0805 33P 5% NPO 50V    | C309 | 015-22180-01 | CAP CER 0805 18P 5% NPO 50V    | D302  | 001-10000-70 | DIODE SMD BAV70 D-SW SOT23     |
| C145  | 015-23100-01 | CAP CER 0805 100P 5% NPO 50V   | C310 | 015-23680-08 | CAP CER 0805 680P 10% X7R 50V  | D303  | 001-00012-50 | DIODE PIN UM9401 UHF PWR/SW    |
| C147  | 015-25100-08 | CAP CER 0805 10N 10% X7R 50V   | C311 | 015-06100-08 | CAP CER 1206 100N 10% X7R 50V  | D304  | 001-00012-50 | DIODE PIN UM9401 UHF PWR/SW    |
| C148  | 015-22180-01 | CAP CER 0805 18P 5% NPO 50V    | C312 | 015-21390-02 | CAP 0805 3P9 +/-0.1P NPO 50V   | D401  | 001-10000-70 | DIODE SMD BAV70 D-SW SOT23     |
| C149  | 015-25100-08 | CAP CER 0805 10N 10% X7R 50V   | C313 | 015-22470-01 | CAP CER 0805 47P 5% NPO 50V    | D140A | 001-10000-18 | DIODE SMD BAT18 S-SW SOT23     |
| C150  | 015-23100-01 | CAP CER 0805 100P 5% NPO 50V   | C314 | 015-23120-01 | CAP CER 0805 120P 5% NPO 50V   |       |              |                                |
| C151  | 015-06100-08 | CAP CER 1206 100N 10% X7R 50V  | C315 | 015-23680-08 | CAP CER 0805 680P 10% X7R 50V  | FB1   | 065-00010-11 | BEAD FERR 4S3 3*1*4MM RED      |
| C152  | 015-23100-01 | CAP CER 0805 100P 5% NPO 50V   | C316 | 015-23680-08 | CAP CER 0805 680P 10% X7R 50V  | FB2   | 065-00010-11 | BEAD FERR 4S3 3*1*4MM RED      |
| C153  | 020-57470-10 | CAP ELCT AI RDL 4U7 50V LO ESR | C317 | 015-23680-08 | CAP CER 0805 680P 10% X7R 50V  | FB3   | 065-00010-08 | BEAD FERR 4S3 3*0.7*10MM RED   |
| C154  | 015-25100-08 | CAP CER 0805 10N 10% X7R 50V   | C318 | 015-23680-08 | CAP CER 0805 680P 10% X7R 50V  | FB4   | 065-00010-11 | BEAD FERR 4S3 3*1*4MM RED      |
| C155  | 015-23100-01 | CAP CER 0805 100P 5% NPO 50V   | C319 | 015-23680-08 | CAP CER 0805 680P 10% X7R 50V  | FB5   | 065-00010-11 | BEAD FERR 4S3 3*1*4MM RED      |
| C157  | 015-06100-08 | CAP CER 1206 100N 10% X7R 50V  | C320 | 015-22560-01 | CAP CER 0805 56P 5% NPO 50V    | FB6   | 065-00010-08 | BEAD FERR 4S3 3*0.7*10MM RED   |
| C158  | 015-24100-08 | CAP CER 0805 1N 10% X7R 50V    | C321 | 015-06100-08 | CAP CER 1206 100N 10% X7R 50V  | FB7   | 065-00010-01 | BEAD FERR 3B 6 HOLE            |
| C160  | 015-23270-01 | CAP CER 0805 270P 5% NPO 50V   | C322 | 015-02300-06 | CAP CER 1210 30P NPO 500V      | FB8   | 065-00010-08 | BEAD FERR 4S3 3*0.7*10MM RED   |
| C174  | 020-58470-05 | CAP ELE AI RDL 47M 16V 6.3X7MM | C323 | 015-03680-06 | CAP CER 1210 680P NPO200VGRM42 | FB9   | 065-00010-11 | BEAD FERR 4S3 3*1*4MM RED      |
| C175  | 015-06100-08 | CAP CER 1206 100N 10% X7R 50V  | C325 | 015-03270-03 | CAP CER 270P 5% 200VHIQ GRM111 |       |              |                                |
| C176  | 015-06100-08 | CAP CER 1206 100N 10% X7R 50V  | C326 | 015-24100-08 | CAP CER 0805 1N 10% X7R 50V    | IC101 | 002-10033-71 | IC SMD MC3371D IF DET RSSI     |
| C179  | 015-25100-08 | CAP CER 0805 10N 10% X7R 50V   | C327 | 015-06100-08 | CAP CER 1206 100N 10% X7R 50V  | IC201 | 002-10451-58 | IC SMD MC145158DW2 F-SYNTH     |
| C180  | 015-06100-08 | CAP CER 1206 100N 10% X7R 50V  | C328 | 015-25100-08 | CAP CER 0805 10N 10% X7R 50V   | IC202 | 002-10330-78 | IC MC33078D 2X AMP LO NOISE    |
| C181  | 015-06100-08 | CAP CER 1206 100N 10% X7R 50V  | C329 | 015-02820-03 | CAP CER 82P 5% 500V HIQ GRM111 | IC203 | 002-10120-52 | IC MC12052 PRESCAIR LOW        |
| C185  | 015-25100-08 | CAP CER 0805 10N 10% X7R 50V   | C330 | 015-03100-03 | CAP CER 100P 5% 500VHIQ GRM111 | IC402 | 002-00013-70 | IC TDA1020 AF PWR AMP 9DIL     |
| C186  | 015-25100-08 | CAP CER 0805 10N 10% X7R 50V   | C331 | 015-02680-06 | CAP CER 1210 68P NPO 500V      | IC403 | 002-00078-08 | IC MC7808ACT 8V REG 1A TO220   |
| C187  | 015-24100-08 | CAP CER 0805 1N 10% X7R 50V    | C332 | 015-02150-06 | CAP CER 1210 15P NPO500VGRM42  | IC404 | 002-00078-05 | IC MC7805ACT 5V REG 1A TO220   |
| C188  | 015-23100-01 | CAP CER 0805 100P 5% NPO 50V   | C333 | 015-03680-06 | CAP CER 1210 680P NPO200VGRM42 | L1    | 030-50000-00 | LINK WIRE AI ZERO OHM 0.6      |
| *C189 | 015-23470-08 | CAP CER 0805 470P 10% X7R 50V  | C334 | 015-02220-06 | CAP CER 1210 22P 5% 500V GRM42 | L101  | 052-08145-45 | COIL A/W 4.5T/4.5MM HOR 0.8MM  |
| *C190 | 015-23470-08 | CAP CER 0805 470P 10% X7R 50V  | C335 | 015-01560-06 | CAP CER 1210 5P6 NPO500VGRM42  | L104  | 050-00016-68 | COIL RF 4.5 T 7.5MM2 23.5PF    |
| C191  | 015-24100-08 | CAP CER 0805 1N 10% X7R 50V    | C336 | 015-03680-06 | CAP CER 1210 680P NPO200VGRM42 | L105  | 050-00016-68 | COIL RF 4.5 T 7.5MM2 23.5PF    |
| C192  | 015-22330-01 | CAP CER 0805 33P 5% NPO 50V    | C337 | 015-23680-08 | CAP CER 0805 680P 10% X7R 50V  | L106  | 050-00016-68 | COIL RF 4.5 T 7.5MM2 23.5PF    |
| C193  | 020-57470-10 | CAP ELCT AI RDL 4U7 50V LO ESR | C338 | 015-22330-01 | CAP CER 0805 33P 5% NPO 50V    | L107  | 050-00016-65 | COIL BALUN 7.2MM2 5X0.5PINS    |
| C194  | 015-23680-08 | CAP CER 0805 680P 10% X7R 50V  | C339 | 015-02330-06 | CAP CER 1210 33P NPO 500V      | L108  | 050-00016-65 | COIL BALUN 7.2MM2 5X0.5PINS    |
| C195  | 015-23680-08 | CAP CER 0805 680P 10% X7R 50V  | C340 | 015-02680-06 | CAP CER 1210 68P NPO 500V      | L109  | 052-08135-25 | COIL A/W 2.5T/3.5MM HOR 0.8MM  |
| C196  | 015-06100-08 | CAP CER 1206 100N 10% X7R 50V  | C341 | 015-02680-06 | CAP CER 1210 68P NPO 500V      | L110  | 056-00021-61 | IND FXD 1.0UH 10% PHENOLIC     |
| C197  | 015-06100-08 | CAP CER 1206 100N 10% X7R 50V  | C342 | 015-03220-06 | CAP CER 1210 220P NPO500VGRM42 | L114  | 050-00016-62 | COIL IF 1UH AT 30MHZ 6MMSQX6.  |
| C198  | 015-23220-01 | CAP CER 0805 220P 5% NPO 50V   | C345 | 015-23680-08 | CAP CER 0805 680P 10% X7R 50V  | L116  | 050-00016-62 | COIL IF 1UH AT 30MHZ 6MMSQX6.  |
| C199  | 015-24100-08 | CAP CER 0805 1N 10% X7R 50V    | C346 | 015-22120-01 | CAP CER 0805 12P 5% NPO 50V    | L117  | 050-00016-65 | COIL BALUN 7.2MM2 5X0.5PINS    |
| C200  | 015-25100-08 | CAP CER 0805 10N 10% X7R 50V   | C347 | 015-21820-02 | CAP 0805 8P2 0.1 NPO 50V       | L118  | 05           |                                |

| Ref   | IPN          | Description                    |
|-------|--------------|--------------------------------|
| L304  | 052-08135-25 | COIL A/W 2.5T/3.5MM HOR 0.8MM  |
| L305  | 052-08140-45 | COIL A/W 4.5T/4.0MM HOR 0.8MM  |
| L306  | 057-10005-03 | IND 0805 EMI SUP 5E@100MHZ 0.5 |
| L307  | 052-08150-15 | COIL A/W 1.5T/5.0MM HOR 0.8MM  |
| L308  | 030-50000-00 | LINK WIRE AI ZERO OHM 0.6      |
| L309  | 030-50000-00 | LINK WIRE AI ZERO OHM 0.6      |
| L310  | 052-08140-15 | COIL A/W 1.5T/4.0MM HOR 0.8MM  |
| L311  | 052-08140-45 | COIL A/W 4.5T/4.0MM HOR 0.8MM  |
| L312  | 056-00021-60 | IND FXD 330NH AX N/MAG 6.6*2.7 |
| L313  | 052-08155-25 | COIL A/W 2.5T/5.5MM HOR 0.8MM  |
| L314  | 030-50000-00 | LINK WIRE AI ZERO OHM 0.6      |
| L315  | 030-50000-00 | LINK WIRE AI ZERO OHM 0.6      |
| L316  | 052-08130-15 | COIL A/W 1.5T/3.0MM HOR 0.8MM  |
| L317  | 052-08155-15 | COIL A/W 1.5T/5.5MM HOR 0.8MM  |
| L318  | 052-56135-85 | COIL A/W 8.5T/3.5MM HOR 0.56MM |
| L319  | 056-00021-01 | IND FXD 1.5UH AXIAL            |
| L320  | 052-08145-55 | COIL A/W 5.5T/4.5MM HOR 0.8MM  |
| L321  | 056-00021-52 | IND FXD 820NH 10% NON MAGNETIC |
| L322  | 052-08140-25 | COIL A/W 2.5T/4.0MM HOR 0.8MM  |
| L323  | 052-08140-15 | COIL A/W 1.5T/4.0MM HOR 0.8MM  |
| L324  | 052-08130-15 | COIL A/W 1.5T/3.0MM HOR 0.8MM  |
| L325  | 052-08140-25 | COIL A/W 2.5T/4.0MM HOR 0.8MM  |
| L326  | 030-50000-00 | LINK WIRE AI ZERO OHM 0.6      |
| L327  | 051-00613-01 | COIL HAIR PIN 9.5NH T2K3       |
| L331  | 057-10005-03 | IND 0805 EMI SUP 5E@100MHZ 0.5 |
| L401  | 050-00016-50 | COIL TAIT NO 650 455KHZ        |
| L316A | 052-08130-15 | COIL A/W 1.5T/3.0MM HOR 0.8MM  |
| P2    | 219-02005-00 | T2000 12W LOOM LOGIC RF LONG   |
| P3    | 240-00026-21 | PLUG CAP HOUSING 7-POS         |
| P5    | 240-00010-76 | PLUG HEADER 10W M-MATCH PCB    |
| P6    | 240-00010-76 | PLUG HEADER 10W M-MATCH PCB    |
| P7    | 240-00020-72 | HEADER 2W PCB MG ULTRES        |
| Q100  | 000-10003-12 | XSTR SMD BFR31 N JFET SOT23    |
| Q101  | 000-10095-10 | XSTR SMD BR951 NPN UHF         |
| Q102  | 000-10008-57 | XSTR SMD BC857 PNP SOT23 SS    |
| Q103  | 000-10095-10 | XSTR SMD BR951 NPN UHF         |
| Q105  | 000-10095-10 | XSTR SMD BR951 NPN UHF         |
| Q106  | 000-10008-47 | XSTR BC847B NPN SOT23          |
| Q107  | 000-10008-92 | XSTR SMD BFS17 NPN SOT23       |
| Q108  | 000-10008-92 | XSTR SMD BFS17 NPN SOT23       |
| Q109  | 000-10008-24 | XSTR SMD BF824 PNP SOT23 SS    |
| Q110  | 000-10008-92 | XSTR SMD BFS17 NPN SOT23       |
| Q115  | 000-10008-47 | XSTR BC847B NPN SOT23          |
| Q201  | 000-10008-57 | XSTR SMD BC857 PNP SOT23 SS    |
| Q202  | 000-10008-47 | XSTR BC847B NPN SOT23          |
| Q203  | 000-10008-47 | XSTR BC847B NPN SOT23          |
| Q204  | 000-10008-47 | XSTR BC847B NPN SOT23          |
| Q205  | 000-10008-57 | XSTR SMD BC857 PNP SOT23 SS    |
| Q206  | 000-10008-47 | XSTR BC847B NPN SOT23          |
| Q207  | 000-10008-57 | XSTR SMD BC857 PNP SOT23 SS    |
| Q208  | 000-10008-47 | XSTR BC847B NPN SOT23          |
| Q209  | 000-10008-57 | XSTR SMD BC857 PNP SOT23 SS    |
| Q210  | 000-10003-12 | XSTR SMD BFR31 N JFET SOT23    |
| Q211  | 000-10008-07 | XSTR SMD BC807 PNP SOT23 AF    |
| Q212  | 000-10003-10 | XSTR SMD BFJ310 JFET UHF       |
| Q213  | 000-10008-47 | XSTR BC847B NPN SOT23          |
| Q214  | 000-10095-10 | XSTR SMD BR951 NPN UHF         |
| Q215  | 000-10095-10 | XSTR SMD BR951 NPN UHF         |
| Q301  | 000-10095-10 | XSTR SMD BR951 NPN UHF         |
| Q302  | 000-10144-27 | XSTR SMD MSMRF4427 SO-8        |
| Q303  | 000-10008-47 | XSTR BC847B NPN SOT23          |
| Q304  | 000-00012-15 | XSTR BD234 PNP AF PWR TO126    |
| Q305  | 000-00032-70 | XSTR MRF237 TO-39 4W VHF MSEMI |
| Q306  | 000-00032-90 | XSTR MRF1946A VHF 30W S-MTG    |
| Q307  | 000-10008-47 | XSTR BC847B NPN SOT23          |
| Q308  | 000-10008-07 | XSTR SMD BC807 PNP SOT23 AF    |
| Q309  | 000-10008-07 | XSTR SMD BC807 PNP SOT23 AF    |
| Q401  | 000-10008-57 | XSTR SMD BC857 PNP SOT23 SS    |
| Q402  | 000-10008-17 | XSTR SMD BC817-25 NPN SOT23    |
| R100  | 036-13180-00 | RES M/F 0805 180E 5%           |
| R101  | 036-14390-00 | RES M/F 0805 3K9 5%            |
| R102  | 036-13560-00 | RES M/F 0805 560E 5%           |
| R103  | 036-14220-00 | RES M/F 0805 2K2 5%            |
| R104  | 036-13120-00 | RES M/F 0805 120E 5%           |
| R105  | 036-12180-00 | RES M/F 0805 18E 5%            |
| R106  | 036-16100-00 | RES M/F 0805 100K 5%           |
| R107  | 036-16100-00 | RES M/F 0805 100K 5%           |
| R108  | 036-16100-00 | RES M/F 0805 100K 5%           |
| R109  | 036-10000-00 | RES M/F 0805 ZERO OHM          |
| R110  | 036-16150-00 | RES M/F 0805 150K 5%           |
| R111  | 036-16150-00 | RES M/F 0805 150K 5%           |
| R112  | 036-12470-00 | RES M/F 0805 47E 5%            |
| R113  | 036-11470-00 | RES M/F 0805 4E7 5%            |
| R114  | 036-13820-00 | RES M/F 0805 820E 5%           |
| R115  | 036-15120-00 | RES M/F 0805 12K 5%            |
| R116  | 036-11470-00 | RES M/F 0805 4E7 5%            |
| R117  | 036-12100-00 | RES M/F 0805 10E 5%            |
| R118  | 036-13100-00 | RES M/F 0805 100E 5%           |
| R119  | 036-12100-00 | RES M/F 0805 10E 5%            |
| R120  | 036-13820-00 | RES M/F 0805 820E 5%           |
| R121  | 036-13180-00 | RES M/F 0805 180E 5%           |
| R122  | 036-16100-00 | RES M/F 0805 100K 5%           |
| R123  | 036-16100-00 | RES M/F 0805 100K 5%           |
| R124  | 036-16100-00 | RES M/F 0805 100K 5%           |
| R125  | 036-12100-00 | RES M/F 0805 10E 5%            |
| *R129 | 036-10000-00 | RES M/F 0805 ZERO OHM          |
| *R130 | 036-10000-00 | RES M/F 0805 ZERO OHM          |
| R131  | 036-13100-00 | RES M/F 0805 100E 5%           |
| R132  | 036-14220-00 | RES M/F 0805 2K2 5%            |
| R133  | 036-13270-00 | RES M/F 0805 270E 5%           |
| R135  | 036-15100-00 | RES M/F 0805 10K 5%            |
| R138  | 036-16100-00 | RES M/F 0805 100K 5%           |
| R140  | 036-15680-00 | RES M/F 0805 68K 5%            |
| R141  | 036-14150-00 | RES M/F 0805 1K5 5%            |
| R142  | 036-15270-00 | RES M/F 0805 27K 5%            |
| R143  | 036-15330-00 | RES M/F 0805 33K 5%            |
| R144  | 036-15680-00 | RES M/F 0805 68K 5%            |
| R145  | 036-14150-00 | RES M/F 0805 1K5 5%            |
| R146  | 036-12220-00 | RES M/F 0805 22E 5%            |
| R147  | 036-13220-00 | RES M/F 0805 220E 5%           |
| R148  | 036-13560-00 | RES M/F 0805 560E 5%           |
| R150  | 036-16100-00 | RES M/F 0805 100K 5%           |
| *R151 | 036-14330-00 | RES M/F 0805 3K3 5%            |
| *R152 | 036-16390-00 | RES M/F 0805 390K 5%           |
| R153  | 036-14100-00 | RES M/F 0805 1K 5%             |
| R155  | 036-16100-00 | RES M/F 0805 100K 5%           |
| R156  | 036-13100-00 | RES M/F 0805 100E 5%           |
| R157  | 036-15100-00 | RES M/F 0805 10K 5%            |
| R158  | 036-14100-00 | RES M/F 0805 1K 5%             |
| R159  | 036-12470-00 | RES M/F 0805 47E 5%            |
| R160  | 036-12100-00 | RES M/F 0805 10E 5%            |
| R161  | 036-14100-00 | RES M/F 0805 1K 5%             |
| R162  | 036-10000-00 | RES M/F 0805 ZERO OHM          |
| *R162 | 036-10000-00 | RES M/F 0805 ZERO OHM          |
| *R163 | 036-10000-00 | RES M/F 0805 ZERO OHM          |
| *R194 | 036-10000-00 | RES M/F 0805 ZERO OHM          |
| R195  | 036-15680-00 | RES M/F 0805 68K 5%            |
| R196  | 036-13100-00 | RES M/F 0805 100E 5%           |
| R197  | 036-13100-00 | RES M/F 0805 100E 5%           |
| R198  | 036-14220-00 | RES M/F 0805 2K2 5%            |
| R199  | 036-13100-00 | RES M/F 0805 100E 5%           |
| #R200 | 036-10000-00 | RES M/F 0805 ZERO OHM          |
| R213  | 036-13330-00 | RES M/F 0805 330E 5%           |
| R214  | 036-14120-00 | RES M/F 0805 1K2 5%            |
| R217  | 036-12470-00 | RES M/F 0805 47E 5%            |
| R218  | 036-15120-00 | RES M/F 0805 12K 5%            |
| R219  | 036-13270-00 | RES M/F 0805 270E 5%           |
| R220  | 036-14680-00 | RES M/F 0805 6K8 5%            |
| R221  | 036-13330-00 | RES M/F 0805 330E 5%           |
| R222  | 036-12470-00 | RES M/F 0805 47E 5%            |
| R223  | 036-15220-00 | RES M/F 0805 22K 5%            |
| R224  | 036-15100-00 | RES M/F 0805 10K 5%            |
| R225  | 036-15220-00 | RES M/F 0805 22K 5%            |
| R226  | 036-15100-00 | RES M/F 0805 10K 5%            |
| R227  | 036-15100-00 | RES M/F 0805 10K 5%            |
| R228  | 036-14330-00 | RES M/F 0805 3K3 5%            |
| R229  | 036-12220-00 | RES M/F 0805 22E 5%            |
| R230  | 036-13390-00 | RES M/F 0805 390E 5%           |
| R231  | 036-13180-00 | RES M/F 0805 180E 5%           |
| R232  | 036-14220-00 | RES M/F 0805 2K2 5%            |
| R233  | 036-13680-00 | RES M/F 0805 680E 5%           |
| R234  | 036-13180-00 | RES M/F 0805 180E 5%           |
| R235  | 036-13330-00 | RES M/F 0805 330E 5%           |
| R236  | 036-12470-00 | RES M/F 0805 47E 5%            |
| R237  | 036-13100-00 | RES M/F 0805 100E 5%           |
| R238  | 036-14820-00 | RES M/F 0805 8K2 5%            |
| R239  | 036-15220-00 | RES M/F 0805 22K 5%            |
| R240  | 036-16100-00 | RES M/F 0805 100K 5%           |
| R241  | 036-14120-00 | RES M/F 0805 1K2 5%            |
| R242  | 036-12220-00 | RES M/F 0805 22E 5%            |
| R243  | 036-14220-00 | RES M/F 0805 2K2 5%            |
| R244  | 036-12220-00 | RES M/F 0805 22E 5%            |
| R245  | 036-13100-00 | RES M/F 0805 100E 5%           |
| R246  | 036-13470-00 | RES M/F 0805 470E 5%           |
| R247  | 036-12470-00 | RES M/F 0805 47E 5%            |
| R248  | 036-16100-00 | RES M/F 0805 100K 5%           |
| R249  | 036-12100-00 | RES M/F 0805 10E 5%            |
| R250  | 036-14220-00 | RES M/F 0805 2K2 5%            |
| R251  | 036-13120-00 | RES M/F 0805 120E 5%           |
| R252  | 036-14180-00 | RES M/F 0805 1K8 5%            |
| R253  | 036-13820-00 | RES M/F 0805 820E 5%           |
| R254  | 036-12470-00 | RES M/F 0805 47E 5%            |
| R255  | 036-12100-00 | RES M/F 0805 10E 5%            |
| R256  | 036-14150-00 | RES M/F 0805 1K5 5%            |
| R257  | 036-14120-00 | RES M/F 0805 1K2 5%            |
| R258  | 036-12100-00 | RES M/F 0805 10E 5%            |
| R259  | 036-13220-00 | RES M/F 0805 220E 5%           |
| R260  | 036-12180-00 | RES M/F 0805 18E 5%            |
| R261  | 036-12100-00 | RES M/F 0805 10E 5%            |
| R262  | 036-14680-00 | RES M/F 0805 6K8 5%            |
| R269  | 036-12100-00 | RES M/F 0805 10E 5%            |
| R270  | 036-12100-00 | RES M/F 0805 10E 5%            |
| R271  | 036-13150-00 | RES M/F 0805 150E 5%           |
| R272  | 036-13150-00 | RES M/F 0805 150E 5%           |
| R273  | 036-12100-00 | RES M/F 0805 10E 5%            |
| R274  | 036-14390-00 | RES M/F 0805 3K9 5%            |
| R275  | 036-12100-00 | RES M/F 0805 10E 5%            |
| R278  | 036-16100-00 | RES M/F 0805 100K 5%           |
| R282  | 036-13120-00 | RES M/F 0805 120E 5%           |
| R284  | 036-15100-00 | RES M/F 0805 10K 5%            |
| R285  | 036-15150-00 | RES M/F 0805 15K 5%            |
| R286  | 036-14680-00 | RES M/F 0805 6K8 5%            |
| R287  | 036-16100-00 | RES M/F 0805 100K 5%           |
| R288  | 036-16180-00 | RES M/F 0805 180K 5%           |
| R300  | 030-52680-20 | RES FILM AI 68E 5% 0.4W 4X1.6  |
| R301  | 036-13330-00 | RES M/F 0805 330E 5%           |
| R302  | 036-14100-00 | RES M/F 0805 1K 5%             |
| R303  | 036-13680-00 | RES M/F 0805 680E 5%           |
| R304  | 036-12220-00 | RES M/F 0805 22E 5%            |
| R305  | 036-12100-00 | RES M/F 0805 10E 5%            |
| R306  | 036-12100-00 | RES M/F 0805 10E 5%            |
| R307  | 030-53680-20 | RES FILM AI 680E 5% 0.4W 4X1.6 |
| R308  | 030-53330-20 | RES FILM AI 330E 5% 0.4W 4X1.6 |
| R309  | 030-52330-20 | RES FILM AI 33E 5% 0.4W 4X1.6  |
| R310  | 030-53330-20 | RES FILM AI 330E 5% 0.4W 4X1.6 |
| R311  | 036-13820-00 | RES M/F 0805 820E 5%           |
| R312  | 036-13680-00 | RES M/F 0805 680E 5%           |
| R313  | 030-52330-20 | RES FILM AI 33E 5% 0.4W 4X1.6  |
| R314  | 036-12100-00 | RES M/F 0805 10E 5%            |
| R315  | 036-12470-00 | RES M/F 0805 47E 5%            |
| R316  | 030-52100-20 | RES FILM AI 10E 5% 0.4W 4X1.6  |
| R317  | 036-12100-00 | RES M/F 0805 10E 5%            |
| R318  | 030-52100-20 | RES FILM AI 10E 5% 0.4W 4X1.6  |
| R319  | 030-53330-20 | RES FILM AI 330E 5% 0.4W 4X1.6 |
| R320  | 030-55150-20 | RES FILM AI 15K 5% 0.4W 4X1.6  |
| R322  | 036-12220-00 | RES M/F 0805 22E 5%            |
| R323  | 030-52100-20 | RES FILM AI 10E 5% 0.4W 4X1.6  |
| R324  | 032-33180-00 | RES M/F PWR 180E 5% 1W 12X4.5  |
| R325  | 030-53180-20 | RES FILM AI 180E 5% 0.4W 4X1.6 |
| R326  | 036-16220-00 | RES M/F 0805 220K 5%           |
| R327  | 036-14100-00 | RES M/F 0805 1K 5%             |
| R328  | 030-53150-20 | RES FILM AI 150E 5% 0.4W 4X1.6 |
| R329  | 036-15470-00 | RES M/F 0805 47K 5%            |
| R330  | 036-16220-00 | RES M/F 0805 220K 5%           |
| R331  | 036-16270-00 | RES M/F 0805 270K 5%           |
| R332  | 036-13100-00 | RES M/F 0805 100E 5%           |
| R333  | 036-14220-00 | RES M/F 0805 2K2 5%            |
| R334  | 036-15560-00 | RES M/F 0805 56K 5%            |
| R335  | 036-14180-00 | RES M/F 0805 1K8 5%            |
| R336  | 036-13680-00 | RES M/F 0805 680E 5%           |
| R337  | 036-10000-00 | RES M/F 0805 ZERO OHM          |
| R338  | 036-13220-00 | RES M/F 0805 220E 5%           |
| R339  | 036-15100-00 | RES M/F 0805 10K 5%            |
| R340  | 036-16220-00 | RES M/F 0805 220K 5%           |
| R341  | 036-13220-00 | RES M/F 0805 220E 5%           |
| R418  | 036-13680-00 | RES M/F 0805 680E 5%           |
| R420  | 036-15560-00 | RES M/F 0805 56K 5%            |
| R421  | 036-15560-00 | RES M/F 0805 56K 5%            |
| R422  | 036-12220-00 | RES M/F 0805 22E 5%            |
| R425  | 036-14100-00 | RES M/F 0805 1K 5%             |
| R426  | 036-11470-00 | RES M/F 0805 4E7 5%            |
| R427  | 036-11470-00 | RES M/F 0805 4E7 5%            |
| R428  | 036-12220-0  |                                |

Grid Reference Index

| Device | PCB   | Circuit | Device | PCB   | Circuit | Device | PCB   | Circuit | Device | PCB   | Circuit | Device | PCB    | Circuit | Device | PCB  | Circuit | Device | PCB   | Circuit |
|--------|-------|---------|--------|-------|---------|--------|-------|---------|--------|-------|---------|--------|--------|---------|--------|------|---------|--------|-------|---------|
| C1     | 1:J10 | 1-V9    | C217   | 1:L4  | 1-F4    | C413   | 1:L9  | 1-U8    | L200   | 1:H5  | 1-B2    | Q308   | 1:H8   | 1-R1    | R218   | 1:H2 | 1-C7    | R329   | 1:A10 | 1-T1    |
| C2     | 1:L10 | 1-V8    | C218   | 1:H4  | 1-F5    | C414   | 1:K9  | 1-U9    | L202   | 1:G2  | 1-E6    | Q309   | 1:H8   | 1-R1    | R219   | 1:J2 | 1-D7    | R330   | 1:A10 | 1-U2    |
| C3     | 1:L11 | 1-V8    | C219   | 1:K3  | 1-G4    | C415   | 1:K9  | 1-U9    | L203   | 1:F3  | 1-G6    | Q401   | 1:L8   | 1-O9    | R220   | 1:H2 | 1-D6    | R331   | 1:H9  | 1-Q1    |
| C100   | 1:B5  | 1-U3    | C220   | 1:K4  | 1-G5    | C416   | 1:J10 | 1-U8    | L205   | 1:L6  | 1-A1    | Q402   | 1:L7   | 1-P9    | R221   | 1:H2 | 1-D6    | R332   | 1:B11 | 1-V1    |
| C102   | 1:A6  | 1-T3    | C221   | 1:K4  | 1-G5    | C419   | 1:J8  | 1-K8    | L206   | 1:K5  | 1-B0    |        |        |         | R222   | 1:K2 | 1-F7    | R333   | 1:J7  | 1-J2    |
| C103   | 1:A6  | 1-S3    | C222   | 1:K4  | 1-H3    | C420   | 1:J9  | 1-L8    | L207   | 1:L5  | 1-C1    | R100   | 1:B6   | 1-R3    | R223   | 1:H3 | 1-B5    | R334   | 1:H8  | 1-Q2    |
| C104   | 1:A5  | 1-S3    | C223   | 1:G4  | 1-D2    | C423   | 1:K9  | 1-L9    | L208   | 1:H5  | 1-E2    | R101   | 1:A5   | 1-T3    | R224   | 1:H3 | 1-C6    | R335   | 1:H8  | 1-Q2    |
| C105   | 1:A6  | 1-R3    | C224   | 1:G4  | 1-D2    | C424   | 1:K8  | 1-M9    | L210   | 1:J6  | 1-F1    | R102   | 1:A5   | 1-T3    | R225   | 1:G3 | 1-B5    | R336   | 1:H8  | 1-Q1    |
| C106   | 1:B5  | 1-R3    | C225   | 1:J4  | 1-H3    | C425   | 1:K7  | 1-O8    | L300   | 1:H8  | 1-J0    | R103   | 1:A6   | 1-S3    | R226   | 1:H3 | 1-C5    | R337   | 1:E8  | 1-V2    |
| C107   | 1:B6  | 1-Q2    | C226   | 1:K5  | 1-B1    | C426   | 1:L7  | 1-P9    | L301   | 1:G7  | 1-H0    | R104   | 1:B6   | 1-R3    | R227   | 1:H3 | 1-D6    | R338   | 1:H8  | 1-R1    |
| C108   | 1:B5  | 1-T3    | C227   | 1:K5  | 1-C0    | C427   | 1:L7  | 1-Q8    | L302   | 1:G8  | 1-I0    | R105   | 1:A5   | 1-S3    | R228   | 1:G4 | 1-C5    | R339   | 1:H8  | 1-R2    |
| C109   | 1:B6  | 1-Q2    | C228   | 1:L5  | 1-D1    | C428   | 1:L7  | 1-R8    | L303   | 1:H9  | 1-K1    | R106   | 1:C5   | 1-Q3    | R229   | 1:H4 | 1-D4    | R340   | 1:D8  | 1-U2    |
| C110   | 1:C6  | 1-P2    | C229   | 1:L6  | 1-C1    | C429   | 1:J7  | 1-R8    | L304   | 1:H7  | 1-I0    | R107   | 1:C6   | 1-Q3    | R230   | 1:J4 | 1-D4    | R341   | 1:A9  | 1-U1    |
| C111   | 1:D6  | 1-O3    | C230   | 1:G2  | 1-E7    | C430   | 1:L8  | 1-N9    | L305   | 1:G8  | 1-K0    | R108   | 1:D5   | 1-P3    | R231   | 1:H4 | 1-D5    | R418   | 1:J3  | 1-G6    |
| C112   | 1:C6  | 1-P2    | C231   | 1:J6  | 1-E0    | C431   | 1:L8  | 1-N9    | L306   | 1:J7  | 1-K1    | R109   | 1:F6   | 1-M3    | R232   | 1:J4 | 1-D5    | R420   | 1:J4  | 1-H4    |
| C113   | 1:D6  | 1-O2    | C232   | 1:J6  | 1-F0    | C451   | 1:K11 | 1-V8    | L307   | 1:H9  | 1-M0    | R110   | 1:F6   | 1-M2    | R233   | 1:J3 | 1-E4    | R420A  | 1:K4  | 1-H4    |
| C114   | 1:E6  | 1-N3    | C233   | 1:G3  | 1-D7    | C455   | 1:K11 | 1-V8    | L308   | 1:G9  | 1-M0    | R111   | 1:E6   | 1-M2    | R234   | 1:H3 | 1-E5    | R421   | 1:K4  | 1-I4    |
| C115   | 1:D6  | 1-N2    | C234   | 1:K3  | 1-J3    |        |       |         | L309   | 1:H11 | 1-N2    | R112   | 1:G5   | 1-K5    | R235   | 1:J3 | 1-F5    | R421A  | 1:K4  | 1-I3    |
| C116   | 1:C6  | 1-P3    | C235   | 1:G4  | 1-B3    | D1     | 1:K10 | 1-V9    | L310   | 1:F11 | 1-N1    | R113   | 1:E5   | 1-M5    | R236   | 1:K4 | 1-F5    | R422   | 1:K8  | 1-M9    |
| *C120  | 1:J3  | 1-H7    | C236   | 1:L3  | 1-J4    | D101   | 1:C5  | 1-Q3    | L311   | 1:F10 | 1-N1    | R114   | 1:E5   | 1-L5    | R237   | 1:L4 | 1-F5    | R425   | 1:L10 | 1-T9    |
| C121   | 1:E6  | 1-N2    | C239   | 1:H5  | 1-B2    | #D101  | 1:C5  | 1-Q3    | L312   | 1:J8  | 1-L2    | R115   | 1:E4   | 1-M5    | R238   | 1:K4 | 1-F4    | R426   | 1:L9  | 1-T8    |
| C122   | 1:B6  | 1-R3    | C240   | 1:H6  | 1-G0    | D102   | 1:D5  | 1-P3    | L313   | 1:G9  | 1-L0    | R116   | 1:E5   | 1-N5    | R239   | 1:K3 | 1-F4    | R427   | 1:L9  | 1-U8    |
| C123   | 1:D5  | 1-J3    | C241   | 1:H5  | 1-G2    | #D102  | 1:D5  | 1-P3    | L314   | 1:F9  | 1-O1    | R117   | 1:E4   | 1-M6    | R240   | 1:K3 | 1-G4    | R428   | 1:K8  | 1-M9    |
| C124   | 1:G5  | 1-I2    | C243   | 1:G5  | 1-E2    | #D103  | 1:E5  | 1-N3    | L315   | 1:D9  | 1-P1    | R118   | 1:E4   | 1-M6    | R241   | 1:J4 | 1-G5    | R429   | 1:K7  | 1-O8    |
| C125   | 1:G6  | 1-I3    | C244   | 1:G3  | 1-G7    | D103   | 1:E5  | 1-N3    | L316   | 1:F10 | 1-O0    | R119   | 1:E4   | 1-O6    | R242   | 1:J4 | 1-H4    | R430   | 1:L7  | 1-P9    |
| C126   | 1:G5  | 1-H2    | C245   | 1:G5  | 1-E2    | D105   | 1:C4  | 1-T6    | L316A  | 1:F10 | 1-O1    | R120   | 1:F7   | 1-N4    | R243   | 1:J4 | 1-H3    | R431   | 1:K7  | 1-P9    |
| C127   | 1:G6  | 1-K5    | C246   | 1:J5  | 1-D1    | D106   | 1:D4  | 1-T5    | L317   | 1:C8  | 1-R1    | R121   | 1:F7   | 1-N4    | R244   | 1:K4 | 1-I3    | R432   | 1:L7  | 1-Q9    |
| C128   | 1:F5  | 1-K5    | C247   | 1:G3  | 1-F6    | D107   | 1:B4  | 1-S5    | L318   | 1:B0  | 1-U1    | R122   | 1:D6   | 1-O3    | R245   | 1:H4 | 1-D3    | R433   | 1:K7  | 1-Q9    |
| C129   | 1:E5  | 1-M5    | C248   | 1:J5  | 1-D1    | D107   | 1:B4  | 1-S6    | L319   | 1:D8  | 1-S1    | R123   | 1:E6   | 1-N3    | R246   | 1:G4 | 1-E2    | R434   | 1:J7  | 1-R9    |
| C130   | 1:E4  | 1-M5    | C257   | 1:K3  | 1-F4    | D108   | 1:B5  | 1-S5    | L320   | 1:B7  | 1-S0    | R124   | 1:D5   | 1-O3    | R247   | 1:K5 | 1-A1    | R437   | 1:L10 | 1-V6    |
| C133   | 1:E4  | 1-O5    | C300   | 1:E9  | 1-O1    | D108   | 1:B5  | 1-S5    | L321   | 1:A7  | 1-S0    | R125   | 1:B5   | 1-T3    | R248   | 1:L4 | 1-I4    |        |       |         |
| C134   | 1:D4  | 1-O6    | C301   | 1:G6  | 1-G0    | D110   | 1:G6  | 1-K3    | L322   | 1:B8  | 1-T1    | *R129  | 1:J3   | 1-H8    | R249   | 1:L5 | 1-C1    | RV153  | 1:B2  | 1-M6    |
| C135   | 1:D5  | 1-P5    | C302   | 1:G7  | 1-G0    | D110   | 1:G6  | 1-K3    | L323   | 1:B8  | 1-T1    | *R130  | 1:K3   | 1-H8    | R250   | 1:L6 | 1-C2    | RV222  | 1:J3  | 1-C6    |
| C136   | 1:D4  | 1-P6    | C303   | 1:H7  | 1-J1    | D111   | 1:G6  | 1-K3    | L324   | 1:D10 | 1-P1    | R131   | 1:E7   | 1-T4    | R251   | 1:J5 | 1-D1    | RV324  | 1:E8  | 1-U2    |
| C137   | 1:D5  | 1-P5    | C304   | 1:G8  | 1-H1    | D111   | 1:G6  | 1-K2    | L325   | 1:B9  | 1-U1    | R132   | 1:D4   | 1-U6    | R252   | 1:K6 | 1-E0    |        |       |         |
| C138   | 1:D4  | 1-P6    | C305   | 1:H7  | 1-I0    | D140A  | 1:F7  | 1-P4    | L326   | 1:F9  | 1-P0    | R133   | 1:D7   | 1-U4    | R253   | 1:K6 | 1-D0    | S4     | 1:B11 | 1-W1    |
| C140   | 1:C4  | 1-Q6    | C306   | 1:H7  | 1-I0    | D200   | 1:K3  | 2-H3    | L327   | 1:C10 | 1-R1    | *R134  | 1:K3   | 1-H8    | R254   | 1:J5 | 1-D2    | SHIELD | 1:C5  | 2-Q4    |
| C141   | 1:C4  | 1-Q5    | C307   | 1:G8  | 1-I1    | D200   | 1:K3  | 2-H3    | L331   | 1:J7  | 1-T2    | R135   | 1:E7   | 1-U4    | R255   | 1:J5 | 1-D2    | TP301  | 1:A10 | 1-T1    |
| C142   | 1:E5  | 1-M5    | C308   | 1:H9  | 1-L0    | D202   | 1:G3  | 1-C5    | L401   | 1:L8  | 1-O9    | *R136  | 2:J3   | 1-H8    | R256   | 1:J5 | 1-D1    |        |       |         |
| C145   | 1:E7  | 1-T4    | C309   | 1:G9  | 1-K0    | D202   | 1:G3  | 1-C5    |        |       |         | *R137  | 1:J4   | 1-I8    | R257   | 1:J6 | 1-D0    |        |       |         |
| C147   | 1:E5  | 1-N5    | C310   | 1:H7  | 1-L1    | #D203  | 1:K6  | 1-A0    | P1     | 1:L3  | 2-B2    | R138   | 1:C3   | 1-P6    | R258   | 1:J6 | 1-E0    |        |       |         |
| C148   | 1:F7  | 1-O4    | C311   | 2:G10 | 1-N0    | D203   | 1:K6  | 1-A0    | P2     | 1:K7  | 2-B3    | *R139  | 2:K3   | 1-I7    | R259   | 1:K5 | 1-C0    |        |       |         |
| C149   | 1:F5  | 1-L4    | C312   | 1:H9  | 1-L0    | #D204  | 1:K6  | 1-B0    | P3     | 1:K11 | 2-B4    | R140   | 1:F7   | 1-O4    | R260   | 1:H5 | 1-E2    |        |       |         |
| C150   | 1:F7  | 1-O4    | C313   | 1:H9  | 1-M0    | D204   | 1:K6  | 1-B0    | P5     | 1:B4  | 2-E3    | R140A  | 1:F7   | 1-O4    | R261   | 1:J5 | 1-C2    |        |       |         |
| C151   | 1:F8  | 1-O5    | C314   | 1:H10 | 1-M0    | #D205  | 1:K6  | 1-A0    | P6     | 1:K2  | 2-E4    | R141   | 1:F7   | 1-O4    | R262   | 1:G4 | 1-B2    |        |       |         |
| C152   | 1:F8  | 1-Q4    | C315   | 1:J8  | 1-K1    | D205   | 1:K6  | 1-A0    | P7     | 1:K9  | 2-E2    | R142   | 1:F8   | 1-R4    | R269   | 1:H5 | 1-F1    |        |       |         |
| C152A  | 1:F7  | 1-P4    | C316   | 1:J10 | 1-O2    | #D206  | 1:K6  | 1-B0    | P8     | 1:K3  | 1-G8    | R142A  | 1:F8   | 1-P4    | R270   | 1:H6 | 1-F0    |        |       |         |
| C153   | 1:F8  | 1-Q4    | C317   | 1:J11 | 1-O2    | D206   | 1:K6  | 1-B0    | P9     | 1:K3  | 1-G8    | R143   | 1:F8   | 1-S4    | R271   | 1:H6 | 1-G0    |        |       |         |
| C153A  | 1:F8  | 1-R4    | C318   | 1:H11 | 1-M2    | D208   | 1:H6  | 1-F0    | PAD    | 1:G3  | 1-R6    | R143A  | 1:E8   | 1-Q4    | R272   | 1:H6 | 1-G1    |        |       |         |
| C154   | 1:E8  | 1-S4    | C319   | 1:F11 | 1-N1    | D209   | 1:H6  | 1-F1    |        |       |         | R144   | 1:F8   | 1-Q4    | R273   | 1:H6 | 1-G2    |        |       |         |
| C155   | 1:E7  | 1-S4    | C320   | 2:F10 | 1-N1    | D301   | 1:A9  | 1-U1    | Q100   | 1:F7  | 1-O4    | R144A  | 1:F8   | 1-R4    | R274   | 1:H6 | 1-G1    |        |       |         |
| C157   | 1:E7  | 1-T5    | C321   | 1:G11 | 1-M1    | D302   | 1:G9  | 1-L1    | Q101   | 1:B6  | 1-R3    | R145   | 1:F8   | 1-R4    | R275   | 1:H6 | 1-G0    |        |       |         |
| C158   | 1:F4  | 1-K4    | C322   | 2:F11 | 1-O0    | D302   | 1:G9  | 1-L1    | Q102   | 1:A5  | 1-S3    | R145A  | 1:E8   | 1-R4    | R278   | 1:L4 | 1-I4    |        |       |         |
| C160   | 1:D4  | 1-U5    | C323   | 1:E9  | 1-P1    | D303   | 1:C7  | 1-S1    | Q103   | 1:E4  | 1-N5    | R146   | 1:F7   | 1-R5    | R282   | 1:G2 | 1-E7    |        |       |         |
| C174   | 1:B2  | 1-K8    | C325   | 2:F11 | 1-O0    | D304   | 1:A7  | 1-S0    | Q105   | 1:F7  | 1-P4    | R147   | 1:E7   | 1-S5    | R284   | 1:F4 | 1-J4    |        |       |         |
| C175   | 1:A3  | 1-L8    | C326   | 1:F9  | 1-N1    | D401   | 1:L7  | 1-Q9    | Q106   | 1:F8  | 1-P4    | R148   | 1:E8   | 1-S5    | R285   | 1:L3 | 1-I4    |        |       |         |
| C176   | 1:A2  | 1-L8    | C327   | 1:F9  | 1-O1    | D401   | 1:L7  | 1-Q9    | Q107   | 1:F8  | 1-R4    | R149   | 1:E7   | 1-T5    | R286   | 1:K3 | 1-I3    |        |       |         |
| C179   | 1:B3  | 2-L3    | C328   | 1:G10 | 1-M1    |        |       |         | Q108   | 1:E8  | 1-S4    | R150   | 1:E7   | 1-T4    | R287   | 1:L3 | 1-I4    |        |       |         |
| C180   | 1:A3  | 1-M8    | C329   | 2:D10 | 1-Q0    | H/SINK | 1:G10 | 2-P4    | Q109   | 1:E7  | 1-T4    | *R151  | 1:B3   | 1-L7    | R288   | 1:L3 | 1-J4    |        |       |         |
| C181   | 1:A3  | 1-M8    | C330   | 2:D11 | 1-R0    | IC101  | 1:B3  | 2-L3    | Q110   | 1:E7  | 1-U4    | *R152  | 1:B3   | 1-L6    | R300   | 1:G8 | 1-I1    |        |       |         |
| C185   | 1:F4  | 1-K6    | C331   | 1:C9  | 1-R0    | IC101  | 1:B3  | 1-P6    | Q115   | 1:C2  | 1-O6    | R153   | 1:F7   | 1-O4    | R301   | 1:G7 | 1-H0    |        |       |         |
| C186   | 1:F4  | 1-K6    | C332   | 1:B8  | 1-T0    | IC101  | 1:B3  | 1-M7    | *Q116  | 2:B3  | 1-Q7    | *R154  | 2:K3   | 1-I7    | R302   | 1:G7 | 1-H0    |        |       |         |
| C187   | 1:F4  | 1-P8    | C333   | 1:C8  | 1-R1    | IC101  | 1:B3  | 1-L6    | *Q117  | 2:K3  | 1-J7    | R155   | 1:C2   | 1-O7    | R303   | 1:G7 | 1-I0    |        |       |         |
| C188   | 1:F4  | 1-A6    | C334   | 1:D8  | 1-R0    | IC201  | 1:H3  | 1-B4    | *Q118  | 2:L3  | 1-J7    | R156   | 1:C3   | 1-O8    | R304   | 1:H8 | 1-J0    |        |       |         |
| *C189  | 1:C3  | 1-L6    | C335   | 1:C7  | 1-S0    | IC202  | 1:K3  | 1-G4    | *Q119  | 2:K3  | 1-H7    | R157   | 1:C3   | 1-O7    | R305   | 1:G8 | 1-I1    |        |       |         |
| *C190  | 1:B3  | 1-M7    | C336   | 1:B7  | 1-T1    | IC202  | 1:K3  | 2-H4    | *Q120  | 1:J3  | 1-I8    | R158   | 1:C2   | 1-O7    | R306   | 1:H7 | 1-J0    |        |       |         |
| C191   | 1:C2  | 1-N6    | C337   | 1:D7  | 1-S1    | IC202  | 1:K3  | 1-J4    | Q201   | 1:J3  | 1-B7    | R159   | 1:C3   | 1-R8    | R307   | 1:H8 | 1-K1    |        |       |         |
| C192   | 1:C2  | 1-N7    | C338   | 1:A7  | 1-S0    | IC203  | 1:G4  | 1-E2    | Q202   | 1:H2  | 1-D7    | R160   | 1:B2   | 1-M8    | R308   | 1:H9 | 1-L0    |        |       |         |
| C193   | 1:C3  | 1-O7    | C339   | 1:B8  | 1-T0    | IC402  | 1:J10 | 2-K4    | Q203   | 1:H3  | 1-C5    | R161   | 1:C2   | 1-N6    | R309   | 1:H9 | 1-L0    |        |       |         |
| C194   | 1:F4  | 1-A8    | C340   | 1:B8  | 1-T0    | IC402  | 1:J10 | 1-S8    | Q204   | 1:H3  | 1-C5    | *R162  | 2:B3   | 1-Q8    | R310   | 1:H9 | 1-M0    |        |       |         |
| C195   | 1:F4  | 1-A7    | C341   | 1:B9  | 1-U0    | IC403  | 1:J8  | 1-L9    | Q205   | 1:J4  | 1-D4    | R162   | 1:E7</ |         |        |      |         |        |       |         |





TAIT ELECTRONICS IPN: 220-01314-04 ISS: 4 ID: 2.BA DATE: 22 Feb 2001  
 T2K3-DB PCB LAYOUT - BOTTOM SIDE

Scale: 1:2:1 ; Rotation: 0 degrees



